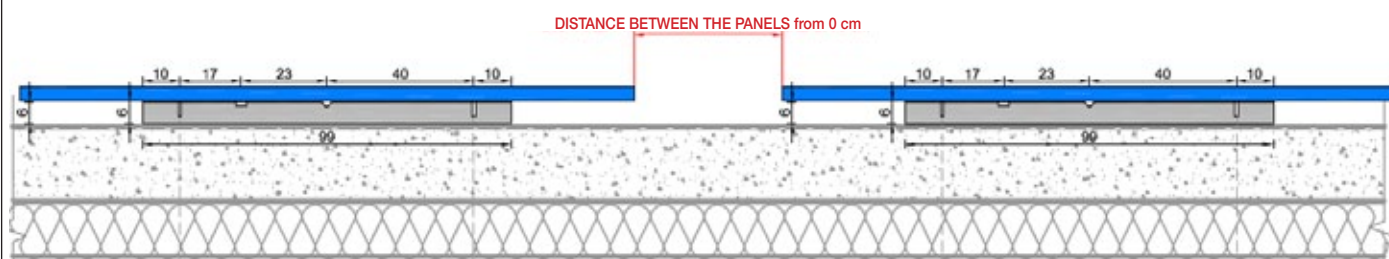


BALLAST WITH 0° ANGLE - Item 23000

DESCRIPTION	Sun Ballast is mainly made of concrete, which ensures low wear over time and high resistance against the harshest weather conditions.		
APPLICATION	Any type of flat or low-pitched roof with up to 10° slope, on the ground, on compacted grounds with inert materials or flooring.		
MODULE TILT ANGLE	0°	NUMBER PER PALLET	36
BALLAST WEIGHT	16 kg	PALLET DIMENSIONS	100 cm x 100 cm h= 50 cm
DISTANCE BETWEEN PANELS	From 0 cm	OVERALL PALLET WEIGHT	576 kg
PV MODULE ORIENTATION	Horizontal, Vertical	PV PANEL DIMENSIONS AS PER DRAWING	165 cm x 99,2 cm

BALLAST DIMENSIONS AND PANEL HEIGHT FROM THE GROUND - UNIT OF MEASUREMENT cm VERTICAL PANEL INSTALLATION

FRONT VIEW

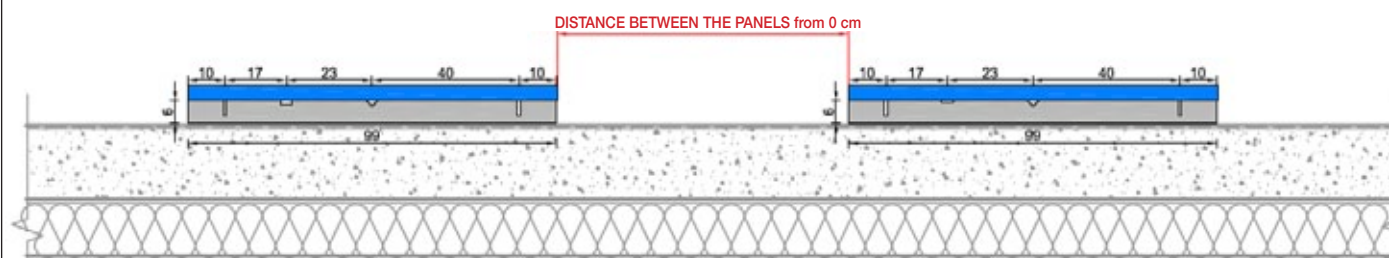


TOP VIEW



BALLAST DIMENSIONS AND PANEL HEIGHT FROM THE GROUND - UNIT OF MEASUREMENT cm HORIZONTAL PANEL INSTALLATION

FRONT VIEW

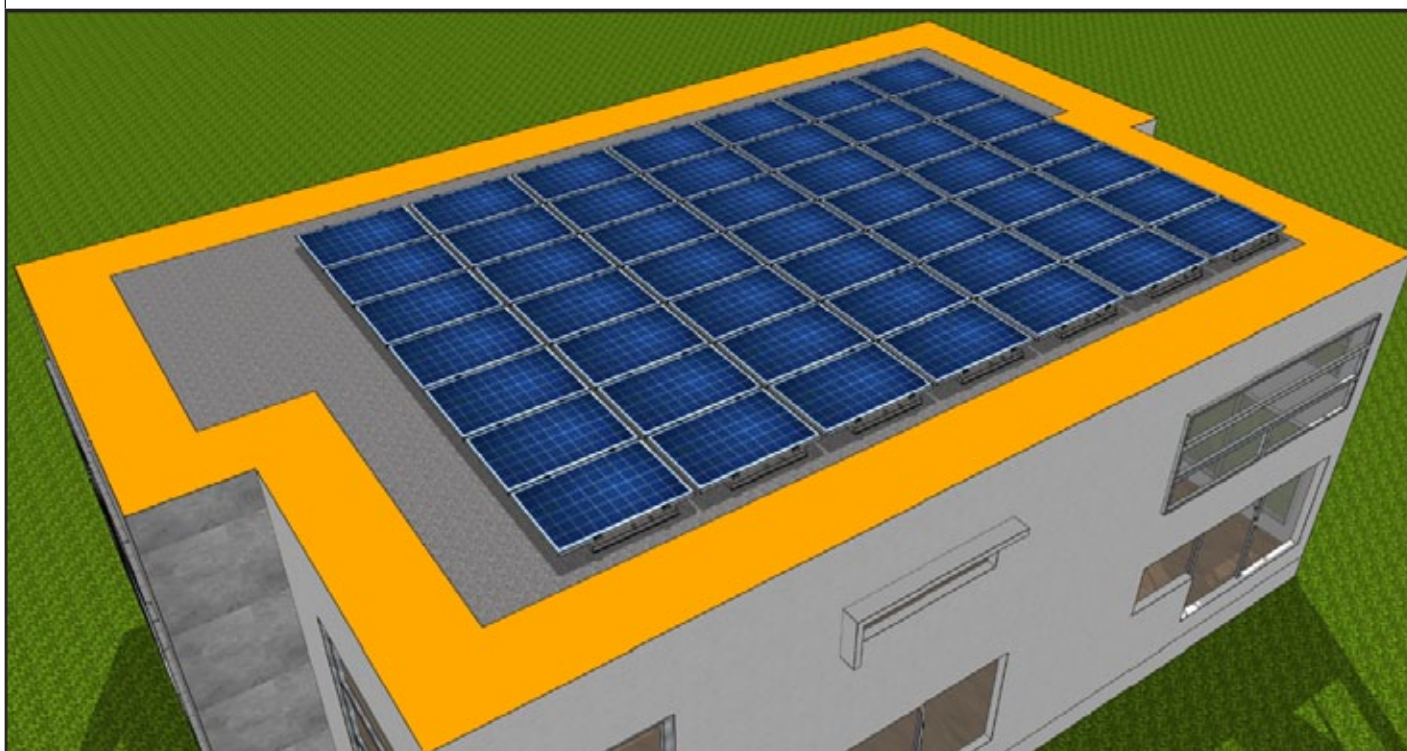


GENERAL NOTES

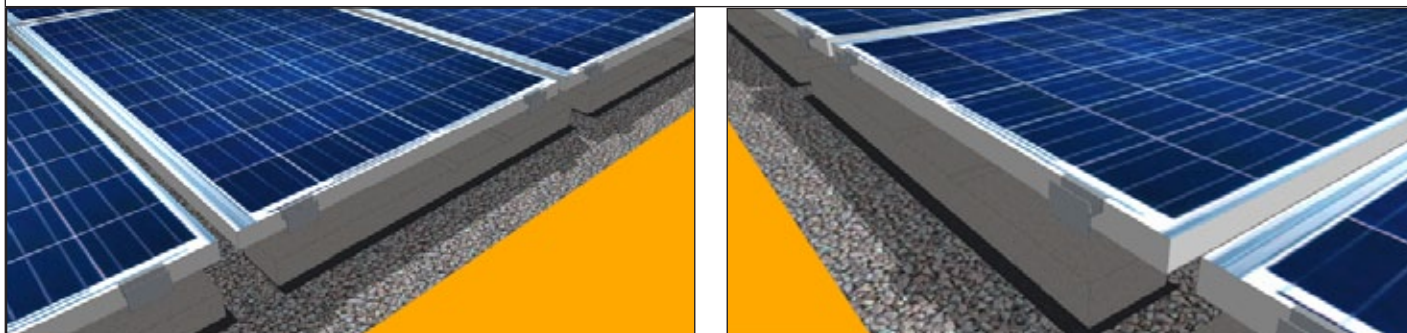
For information, please visit www.sunballast.it



PANEL INSTALLATION ON FLAT ROOFS



BALLAST VIEW ON FLAT ROOF



0° BALLAST
Item 23000